



College of Engineering & Computing

Graduate Studies

ABOUT THE COLLEGE OF ENGINEERING & COMPUTING

As a member of one of the country's top-tier research universities, the College of Engineering & Computing (CEC) is actively engaged in cutting-edge studies and education, and is home to top-level research laboratories and facilities. With close to 5,500 students, CEC graduates the largest number of Hispanic engineers in the continental United States. CEC has two schools — Moss School of Construction, Infrastructure and Sustainability; and the School of Computing and Information Sciences — and four departments — Biomedical Engineering, Civil and Environmental Engineering, Electrical and Computer Engineering, and Mechanical and Materials Engineering. In the latest NSF Higher Education Research and Development (HERD) Survey, computer science was ranked 39th and engineering ranked 83rd. The Higher Education Research and Development Survey tracks R&D expenditures by universities and colleges in the U.S.



ADMISSION REQUIREMENTS

Prospective students seeking a graduate degree in the college must satisfy all university admission requirements as well as the specific program requirements. Each department evaluates candidates for admission to its programs. Prospective students should refer to the appropriate section of the catalog for specific admission requirements and for contact information of the **graduate program directors**.

GRADUATE ADMISSIONS CHECKLIST

General Requirements

- ☐ Online Graduate Application/\$30 application fee **gradschool.fiu.edu**
- ☐ GRE or GMAT (*depends on chosen major*)
- ☐ Official university/college transcript from all institutions previously attended in a sealed institution envelope. If you graduated from FIU, you do not need to request transcripts.
- ☐ TOEFL scores (*550 paper-based, 80 internet-based*), or IELTS scores (*6.5*)
- ☐ Official translations of university/college transcripts
(*if official transcripts are in language other than English*)

Additional Requirements for International Students

- ☐ Proof of degree/diploma (*must be translated if in language other than English*)
- ☐ Translation of proof of degree/diploma
- ☐ Bank and sponsor letter
- ☐ Declaration and certification of finances
- ☐ F-1 Transfer Form (*if currently in U.S.*)

Departmental Requirements

- ☐ Letter of intent
- ☐ Letters of recommendation
- ☐ Resume

GRADUATE FUNDING

The College of Engineering & Computing offers a variety of **fellowships, assistantships, and scholarships** to qualified students. These awards are highly competitive; hence, prospective students are urged to apply and submit all required records and scores as early as possible so they can be considered for these awards. The amounts of these awards vary depending on the type of the award, but they may provide full tuition and a monthly stipend. Financial aid is available for eligible students.

FACILITIES



Tech Station

A **\$3 million, 8,000 sq.ft** hub for technology innovation, training and community engagement built to attract the next generation of top computing students

I-CAVE

The Integrated Computer Augmented Virtual Environment (I-CAVE) is an **instructional and research visualization facility** that allows for 2-D and 3-D visualizations of scalable data and a completely immersive experience in a virtual space.



RANKINGS

The American Society for Engineering Education (ASEE) 2016 Ranking

#1 HIGHEST PERCENTAGE

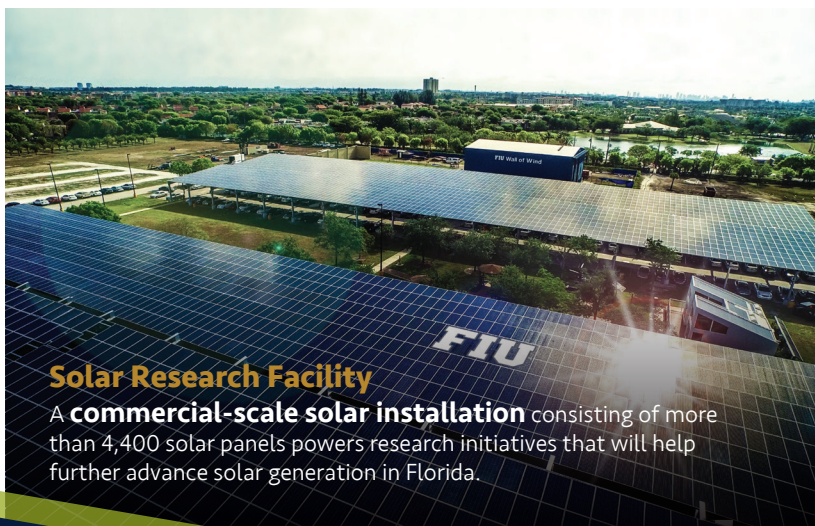
of Doctoral Degrees to Foreign Nationals By School*

#93 for RESEARCH EXPENDI



Wall of Wind (WOW)

FIU's 12-fan Wall of Wind (WOW) is the **largest and most powerful university research facility of its kind.**



Solar Research Facility

A **commercial-scale solar installation** consisting of more than 4,400 solar panels powers research initiatives that will help further advance solar generation in Florida.

TURES**

**Minimum of 25 doctoral degrees awarded. 116 schools fit this criterion.*

***Engineering Research Expenditures, Fiscal 2016, 206 schools reported.*



ABOUT FLORIDA INTERNATIONAL UNIVERSITY

Florida International University is classified by Carnegie as a “R1: Doctoral Universities — Highest Research Activity” and recognized as a Carnegie Community Engaged university. It is a public research university with colleges and schools that offers bachelor’s, master’s and doctoral programs in fields such as business, engineering, computer science, international relations, architecture, law and medicine. As one of South Florida’s anchor institutions, FIU contributes almost \$9 billion each year to the local economy. The university is ranked second in Florida in Forbes Magazine’s “America’s Best Employers” list and received honors in all categories of The Chronicle of Higher Education’s 2017 “Great Colleges to work for” survey. FIU graduates are consistently among the highest paid college graduates in Florida and are among the leaders of public and private organizations throughout South Florida. FIU is Worlds Ahead in finding solutions to the most challenging problems of our time. FIU emphasizes research as a major component of its mission with multiple state-of-the-art research facilities including the Wall of Wind Research and Testing Facility, FIU’s Medina Aquarius Program and the Advanced Materials Engineering Research Institute. FIU has awarded more than 220,000 degrees and enrolls more than 54,000 students in two campuses and centers including FIU Downtown on Brickell, FIU@I-75, the Miami Beach Urban Studios, and Tianjin, China. FIU also supports artistic and cultural engagement through its three museums: Patricia & Phillip Frost Art Museum, the Wolfsonian-FIU, and the Jewish Museum of Florida-FIU. FIU is a member of Conference USA and more than 400 student-athletes participating in 18 sports. For more information about FIU, visit **www.fiu.edu**.



**Be Worlds
Ahead**

GRADUATE DEGREE PROGRAMS

<div><div>MS</div><div>PhD</div><div></div></div> Biomedical Engineering	<div><div></div><div></div><div>CERT</div></div> Electric Power Engineering and Management
<div><div>MS</div><div>PhD</div><div></div></div> Civil Engineering	<div><div>MS</div><div></div><div>CERT</div></div> Engineering Management
<div><div>MS</div><div>PhD</div><div></div></div> Computer Science	<div><div></div><div></div><div>CERT</div></div> Enterprise Systems
<div><div>MS</div><div></div><div></div></div> Construction Management	<div><div>MS</div><div></div><div></div></div> Environmental Engineering
<div><div></div><div>CERT</div><div></div></div> Construction Engineering and Management	<div><div>MS</div><div></div><div></div></div> Information Technology
<div><div>MS</div><div></div><div></div></div> Cybersecurity	<div><div></div><div></div><div>CERT</div></div> Information Technology in Civil Engineering
<div><div>MS</div><div></div><div></div></div> Data Science	<div><div>MS</div><div></div><div></div></div> Logistics Engineering
<div><div></div><div>PhD</div><div></div></div> Electrical & Computer Engineering	<div><div>MS</div><div>PhD</div><div></div></div> Materials Science and Engineering
<div><div>MS</div><div></div><div></div></div> Electrical Engineering	<div><div>MS</div><div>PhD</div><div>CERT</div></div> Mechanical Engineering
<div><div>MS</div><div></div><div></div></div> Computer Engineering	<div><div>MS</div><div></div><div></div></div> Telecommunications and Networking

MS

 Master's Degree

PhD

 Doctorate Degree

CERT

 Certificate



LOCATION

The College of Engineering & Computing is located at the FIU Engineering Center, a 40-acre major research facility home to state-of-the-art research laboratories. Miami offers a year round warm climate with sandy beaches, and a dynamic business district with a global marketplace. The city is a crossroads for trade and travel, and a world-class metropolis with rich cultural diversity. Miami is the perfect city to complement your educational background while experiencing the opportunity to study abroad in a dynamic environment.

GRADUATE STUDIES

Florida International University
College of Engineering & Computing
10555 W. Flagler St., EC 2429
Miami, FL 33174

For general information, visit www.fiu.edu
Florida International University is an
Equal Opportunity/Access Employer and Institution.